



Classic Collection Line Sheet

“ Shoes for the 21st Century ”™

Digitally Mastered Individually Machined Shoe Lasts

34 Models - Available in Standard Sizes and Widths for Men and Women

Men's: Sizes 6 - 16

Widths AA-A-B-C-D-E-EE-EEE

Women's: Sizes 3 - 13

Widths AAA-AA-A-B-C-D-E-EE

Also Available as Bespoke Lasts (Made-to-Measure) for Men and Women

Can Be Made with Extra Depth for Arch Supports or 2 Different Sizes

Line Sheet Index: Thumbnail Photos of the Classic Collection. Complete Catalog Available from ShoeSchool

Page 2 **Shoe Last Ordering Information**

Page 3 **Men's Dress Casual - 7 Models**

Page 4 **Women's Flats - Low Heel - Dress Casual - 6 Models**

Page 5 **Women's Heels - Dress - Fashion - Boots - 9 Models**

Page 6 **Men's & Women's Hiker - Work - 6 Models**

Page 7 **Men's & Women's Sneaker / Moc Flat - Moc Toe Boots - 6 Models**

Page 8-9 ... **Sample Pages from DigiLast Catalog**

DigiLast Shoe Lasts Distributed by: ShoeSchool

ShoeSchool
P.O. Box 1349
Port Townsend, WA 98368
(360) 385.6164



Shoe Last Ordering Information

DigiLast Shoe Lasts are distributed by ShoeSchool. They are available in Industry Standard Sizes and Widths, or as Bespoke Lasts, Made-to-Measure.

To begin the process of ordering shoe lasts from DigiLast you will need to purchase the CD Catalog from the ShoeSchool.com website. Included with the CD catalog are size and measuring charts for Industry Standard Sizes, so you can order the correct sizes.

There is a detailed spec sheet for each last in the Classic Collection with close up photos of toe styles, and side profiles. A sample of a spec sheet from the catalog is available on Page 8 of this line sheet.

Basic Shoe Last Information

A well-rounded collection of Shoe Lasts is the all important secret to being a successful Shoe Designer or Craftsman.

The shoe last is not only your canvas, it is the mold that will give your shoe creations form and function.

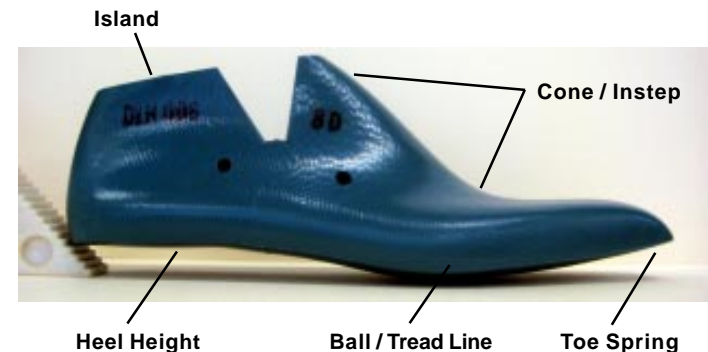
DigiLast has created a "Core" of the most Basic & Classic styles of Shoe Lasts. Now you can order Single Pairs of Lasts or Complete Size Runs, with no minimum number of pairs required. Being able to supply your clients with their own individual lasts will bring repeat orders for the consistency of the fit.

What is a Shoe Last ?

1. The Shoe Last is a Solid Form around which a shoe is molded and assembled.
2. The fit of a shoe depends on the design, shape and volume of the Shoe Last.
3. The Shoe Last must represent the Anatomical Information of the Foot, at the same time giving the finished shoe a pleasing and fashionable appearance.

Each "Shoe Last " is designed for a particular heel height, toe shape, and type of footwear.

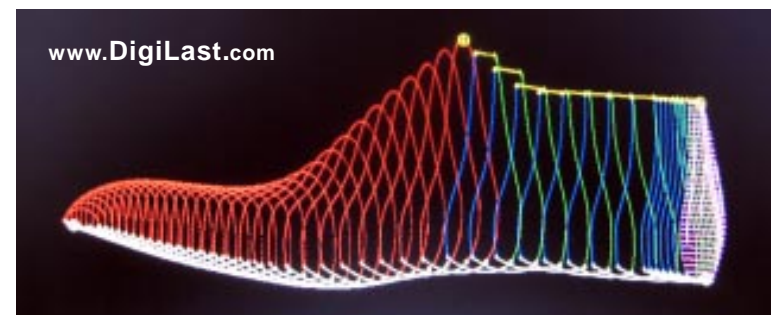
Many styles of shoes can be made on the same shoe last, but the toe shape and heel height will be the same for each pair made on that shoe last. If you want to have shoes with different toe shapes or heel heights, then it is necessary to create more than one pair of shoe lasts. A proper fitting pair of shoe lasts is a solid investment, and the first step towards creating proper fitting, functional and fashionable footwear.



What is a Digitally Mastered Model Last ?

DigiLast Technology brings Old World Last Making into the 21st Century. DigiLast has developed a library of 3D Digital Models of Classic Shoe Lasts for Men and Women.

These Digital Models can be made to any industry standard size or width, or they can be completely customized to the individual foot to create a Bespoke Shoe Last.



DLH 001

Classic Round Toe
Heel 1/2" - 12mm - (4/8)



DLH 004

Rounded Square Toe
Heel 1/2" - 12mm - (4/8)



DLH 007

Squared Box Toe
Heel 1/2" - 12mm - (4/8)



DLH 002

Classic Pointed Toe
Heel 1/2" - 12mm - (4/8)



DLH 005

Broad Round Toe
Heel 1/2" - 12mm - (4/8)



DLH 003

Square Narrow Chisel Toe
Heel 1/2" - 12mm - (4/8)



DLH 006

Square Broad Chisel Toe
Heel 1/2" - 12mm - (4/8)



DLM 008

Pointed Toe
Heel 1/4" - 6mm - (2/8)



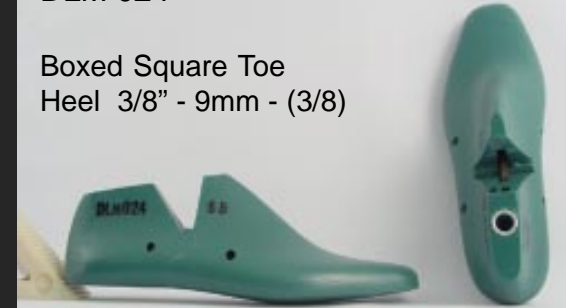
DLM 021

Pointed Round Toe
Heel 3/8" - 9mm - (3/8)



DLM 024

Boxed Square Toe
Heel 3/8" - 9mm - (3/8)



DLM 011

Broad Round Toe
Heel 3/8" - 9mm - (3/8)



DLM 023

Oblique Toe
Heel 3/8" - 9mm - (3/8)



DLM 018

Pointed Toe
Heel 1/4" - 6mm - (2/8)



DLM 012

Boot Last

Pointed Toe

Heel 1/4" - 6mm - (2/8)



DLM 015

Rounded Chisel Toe

Heel 1" - 25mm - (8/8)



DLM 012

Round Pointed Toe

Heel 2 1/2" - 62mm - (20/8)



DLM 013

Snipped Toe

Heel 1" - 25mm - (8/8)



DLM 016

Boot Last

Narrow Boxed Toe

Heel 3/4" - 20mm - (6/8)



DLM 020

Boot Last

Medium Broad Round Toe

Heel 1/2" - 12mm - (4/8)



DLM 014

Pointed Toe

Heel 1" - 25mm - (8/8)



DLM 017

Boot Last

Medium Pointed Toe

Heel 1/2" - 12mm - (4/8)



DLM 022

Boot Last

Round Pointed Toe

Heel 3/4" - 20mm - (6/8)



DLH 803

Broad Round Toe
Heel 3/8" - 9mm - (3/8)



DLH 806

Oblique / Euro Bump Toe
Heel 1/2" - 12mm - (4/8)



DLH 807

Round Classic / Euro Toe
Heel 1/2" - 12mm - (4/8)



----- MEN'S

WOMEN'S -----

DLM 802

Broad Round Toe
Heel 1/4" - 6mm - (2/8)



DLM 804

Broad Round Toe
Heel 1/2" - 12mm - (4/8)



DLM 906

Oblique / Euro Bump Toe
Heel 1/2" - 12mm - (4/8)



DLH 809

Broad Round Toe
Heel Flat - 0mm - (0/0)



----- MEN'S

WOMEN'S -----

DLM 909

Broad Round Toe
Heel Flat - 0mm - (0/0)



DLH 801

Boot Last

Classic Round Moc Toe
Heel 1/2" - 12mm - (4/8)



DLM 901

Boot Last

Classic Round Moc Toe
Heel 1/2" - 12mm - (4/8)



DLH 808

Broad Round Moc Toe
Heel 3/8" - 9mm - (3/8)



DLM 908

Broad Round Moc Toe
Heel 3/8" - 9mm - (3/8)





Classic Rounded Toe, Men's Dress, Casual, Fashion Styles.



Heel Height - 1/2" - 12mm - (4/8)

Toe Spring - 5/8" - 16mm

Model # : DLH 001 **Men's**

Widths: **AA-A-B-C-D-E-EE-EEE**

Shoe Styles: Traditional Dress / Casual / Fashion

Toe Character: Gently Rounded

Side Wall: Low Profile Radiused

Toe Shape: Classic Rounded

Heel Height : Inches: 1/2" - 12mm - (4/8)

Toe Spring : Inches: 5/8" - 16mm

Bottom Metal : Heel Long Full Toe

Hinge : Standard - Alpha Slip - Tendo

SAMPLE PAGE FROM CATALOG



Isometric View - Toe Character
Classic Gently Rounded



Side Wall
Low Profile

To place an order for a Standard Size of this last:

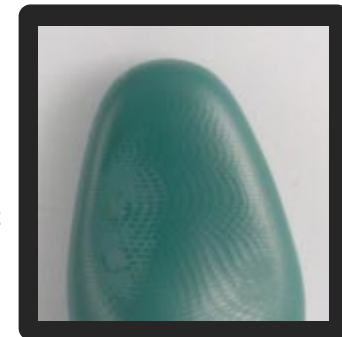
1. Print this page
2. Indicate how many of each size and width
3. Select Hinge

Man Size

Width _____
Width _____
Width _____

| 6 | 6 1/2 | 7 | 7 1/2 | 8 | 8 1/2 | 9 | 9 1/2 | 10 | 10 1/2 | 11 | 11 1/2 | 12 | 12 1/2 | 13 | 13 1/2 | 14 | 14 1/2 | 15 | 15 1/2 | 16 | |
|---|-------|---|-------|---|-------|---|-------|----|--------|----|--------|----|--------|----|--------|----|--------|----|--------|----|--|
| | | | | | | | | | | | | | | | | | | | | | |
| | | | | | | | | | | | | | | | | | | | | | |
| | | | | | | | | | | | | | | | | | | | | | |

Size
Measurement
Charts See
Page 9



Toe Shape
Classic Rounded

